



TOOL SHARPENING KIT

CASCADE FIRE EQUIPMENT COMPANY

P.O. BOX 4248 • MEDFORD, OR 97501

800-654-7049 • 541-779-0394

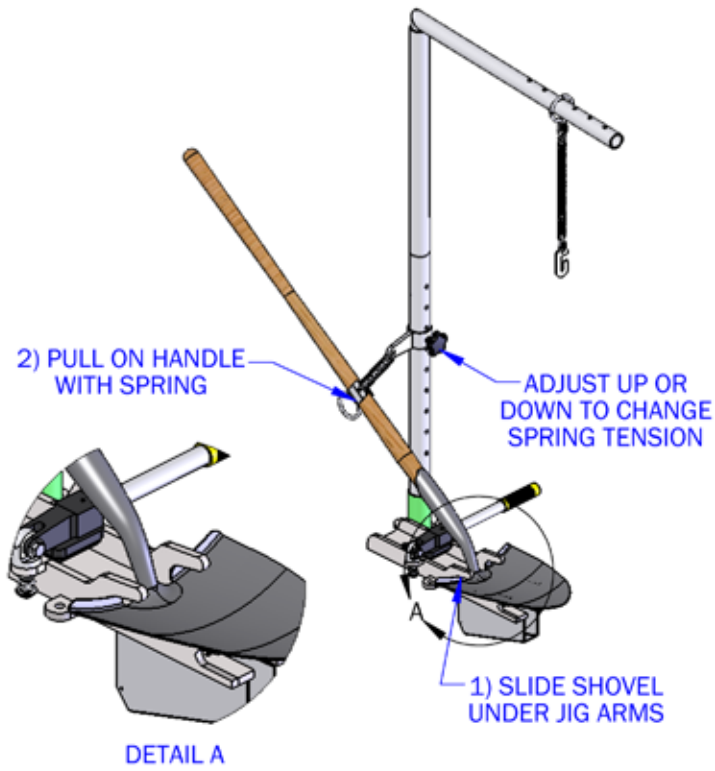
sales@cascadefire.com

www.cascadefire.com

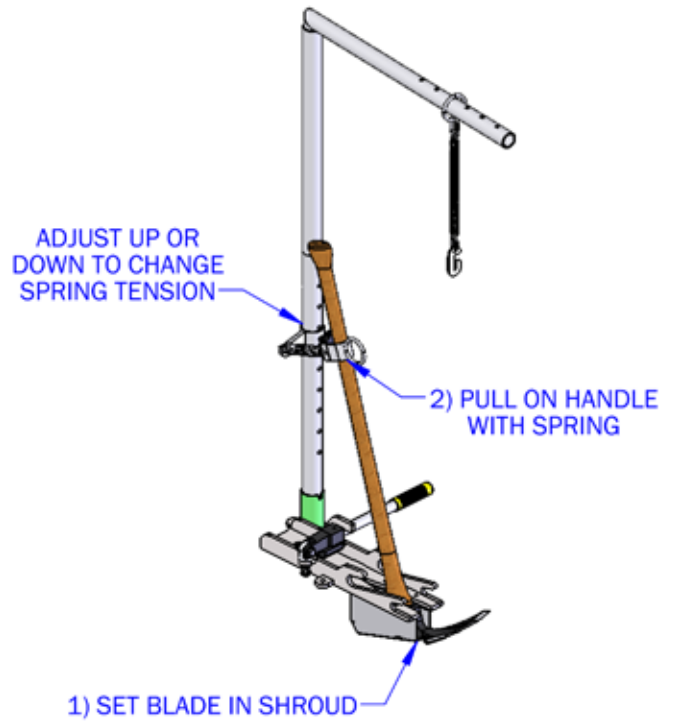


TOOL SHARPENING KIT - OVERVIEW OF TOOLS

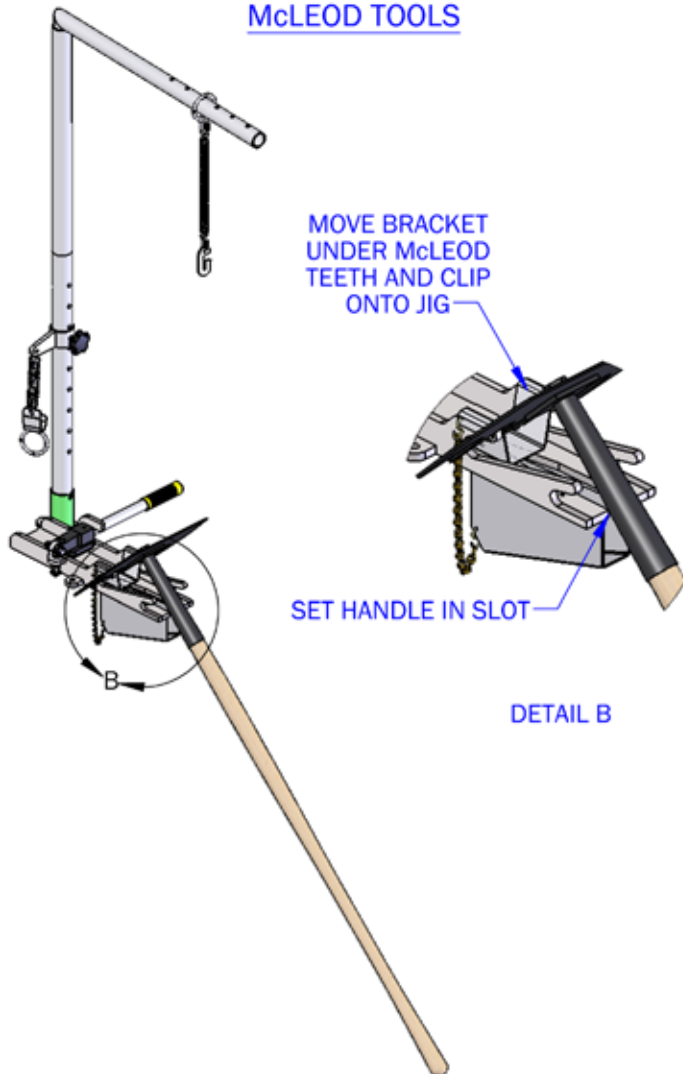
SHOVELS AND HOE-SHOVELS



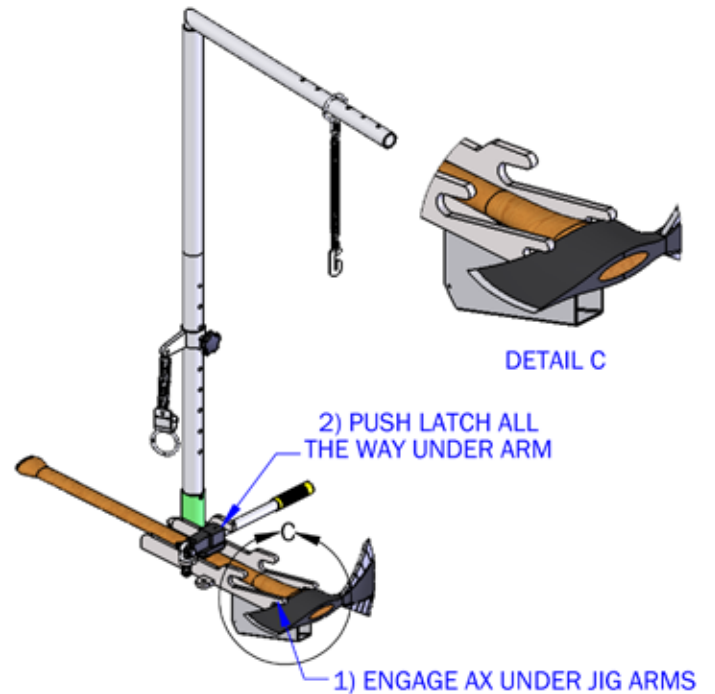
PULASKI TOOLS



McLEOD TOOLS

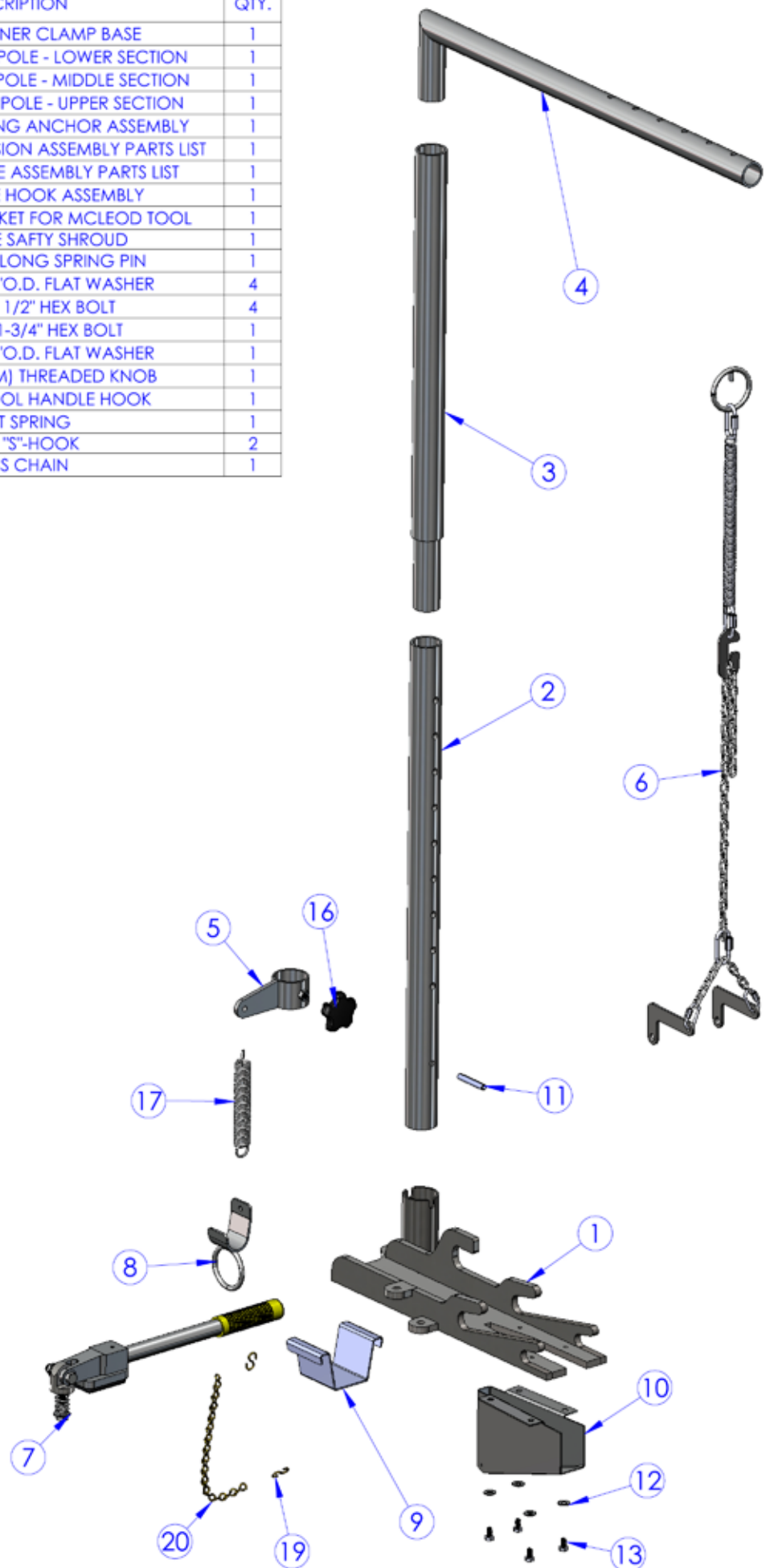


AXES & BRUSH HOOKS

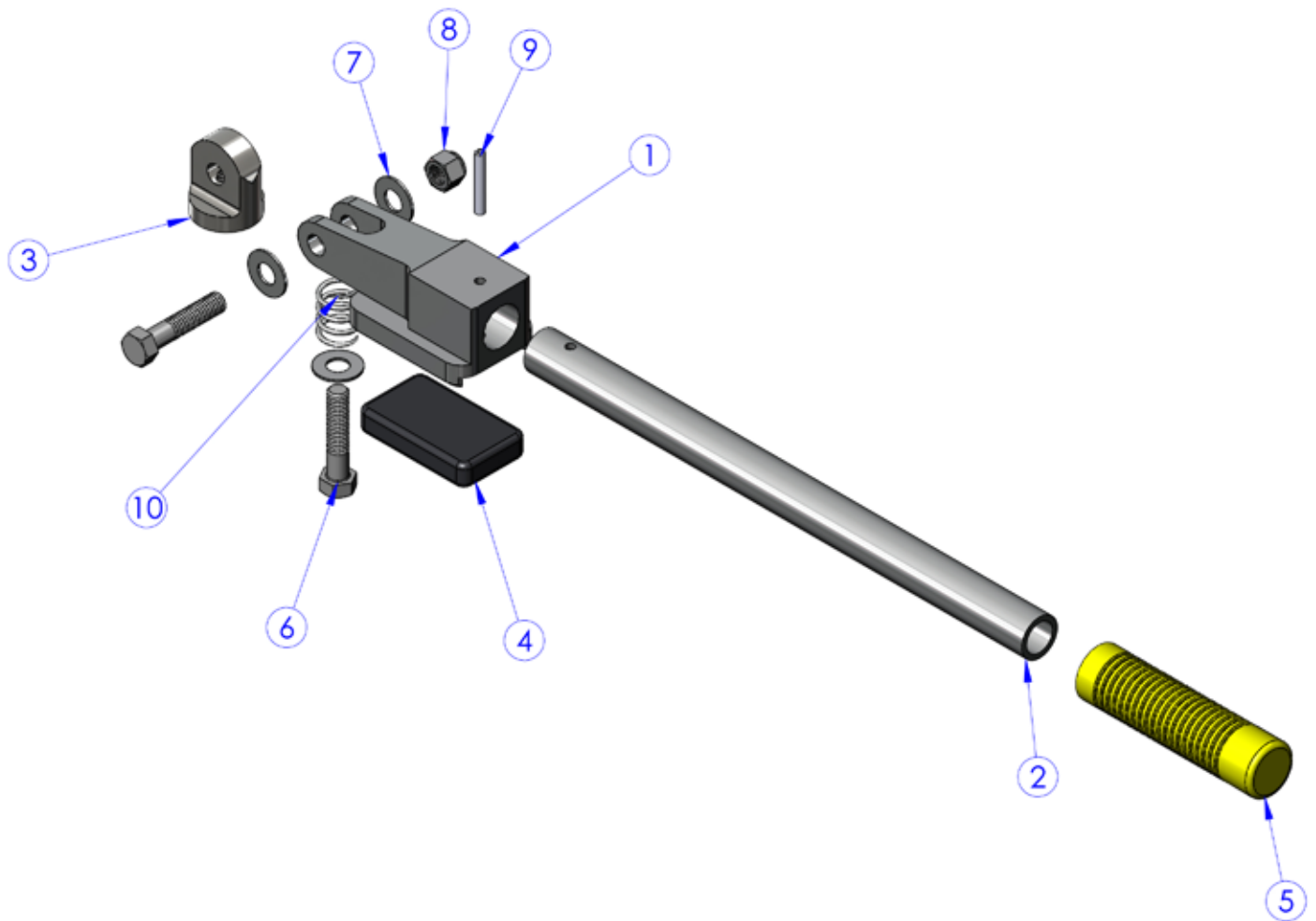


CASCADE FIRE
EQUIPMENT COMPANY

ITEM NO.	PART NUMBER	DESCRIPTION	QTY.
1	40281-01	TOOL SHARPENER CLAMP BASE	1
2	40281-02	GRINDER SUPPORT POLE - LOWER SECTION	1
3	40281-03	GRINDER SUPPORT POLE - MIDDLE SECTION	1
4	40281-04	GRINDER SUPPORT POLE - UPPER SECTION	1
5	40281-06	TOOL HANDLE SPRING ANCHOR ASSEMBLY	1
6	40281-07	SEE GRINDER SUSPENSION ASSEMBLY PARTS LIST	1
7	40281-08	SEE LATCH HANDLE ASSEMBLY PARTS LIST	1
8	40281-09	TOOL HANDLE HOOK ASSEMBLY	1
9	40281-10	ANTI-WOBBLE BRACKET FOR MCLEOD TOOL	1
10	40281-50	TOOL BLADE SAFTY SHROUD	1
11	14043-03	5/16" DIA. x 2" LONG SPRING PIN	1
12	WA0250-0625FL	SS 1/4" I.D. x 5/8" O.D. FLAT WASHER	4
13	S0250-20-0500HB	SS 1/4-20 x 1/2" HEX BOLT	4
14	S0375-16-1750HB	SS 3/8-16 x 1-3/4" HEX BOLT	1
15	WA0375-0875FL	SS 3/8" I.D. x 7/8" O.D. FLAT WASHER	1
16	X934	5/16-18 x 3/4" (M) THREADED KNOB	1
17	X935	EXT. SPRING, TOOL HANDLE HOOK	1
18	X937	PIVOT SPRING	1
19	X938	BRASS "S"-HOOK	2
20	X939	BRASS CHAIN	1



ITEM NO.	PART NUMBER	DESCRIPTION	QTY.
1	40281-08-01	LATCH HANDLE BODY	1
2	40281-08-02	LATCH HANDLE TUBE	1
3	40281-08-03	PIVOT LUG FOR LATCH HANDLE	1
4	40281-10-3	RUBBER PAD FOR LATCH HANDLE	1
5	10313-03	RUBBER HANDLE GRIP	1
6	S0375-16-1750HB	SS 3/8-16 x 1-3/4" HEX BOLT	2
7	WA0375-0875FL	SS 3/8" I.D. x 7/8" O.D. FLAT WASHER	3
8	N0375-16NY	SS 3/8-16 NYLOCK HEX NUT	1
9	X932	3/16" O.D. x 1-1/4" LONG SPRING PIN	1
10	X937	PIVOT SPRING	1



ITEM NO.	PART NUMBER	DESCRIPTION	QTY.
1	X943	3/16" OVAL THREADED CONNECTOR (NOT FOR LIFTING)	3
2	X945	#4 TRADE SIZE STEEL STRAIGHT LINK CHAIN	1
3	40281-07-01	CHAIN ADJUSTMENT BRACKET	1
4	X936	DOUBLE LOOP EXTENSION SPRING 5/8" x 0.072" x 10"	1
5	X945	#4 TRADE SIZE STEEL STRAIGHT LINK CHAIN	2
6	X941	1/8" OVAL THREADED CONNECTOR (NOT FOR LIFTING)	2
7	40281-07-02	GRINDER ATTACHMENT BRACKET	2
8	X923	WELDED STEEL RING, 1/4" DIA. x 2" I.D.	1

